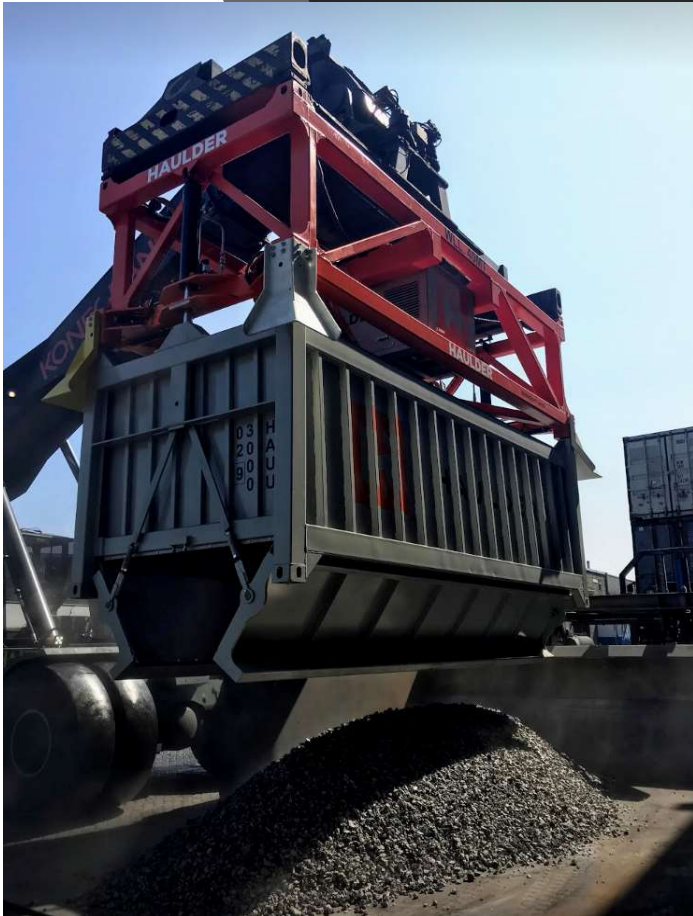


# BULK CONTAINERS WITH BOTTOM DOORS AND SPECIAL SPREADER:



- A spreader suitable for the handling of bottom door containers of different heights making it possible to handle different commodities with the same spreader. Besides the bottom door containers this spreader is also able to handle 20ft dry containers.
- This spreader can be operated with a hoisting device such as a mobile harbor crane or quay crane and due to its tare of 6 tons it can also operate in combination with a ships crane, a in warehouse overhead/ bridge crane or reach stacker.
- This innovative container design will provide the operator with a controlled, save, clean, fast and dust free discharging operation. A balanced gravity center during discharging at all times assuring a controlled cargo flow.
- No lid lifting is necessary for discharging of the cargo assuring the highest level of environmental compliance during the entire chain.
- All our lifting equipment and cranes are engineered and produced in Europe and inspected by certified parties ensuring lifting equipment compliance with international standards for safety and reliability.